

Adjustable Hand Levers

**Stainless Steel, Polished,
with Internal Thread / Fitting Bore,
with Threaded Stud**

SPECIFICATION

Types

- Type **AS**: With external hex
- Type **IS**: With internal hexalobular

Handle

Stainless steel precision casting AISI CF-8
Polished

Insert / Retaining screw

Stainless steel AISI 303

Pressure spring

Stainless steel AISI 301



INFORMATION

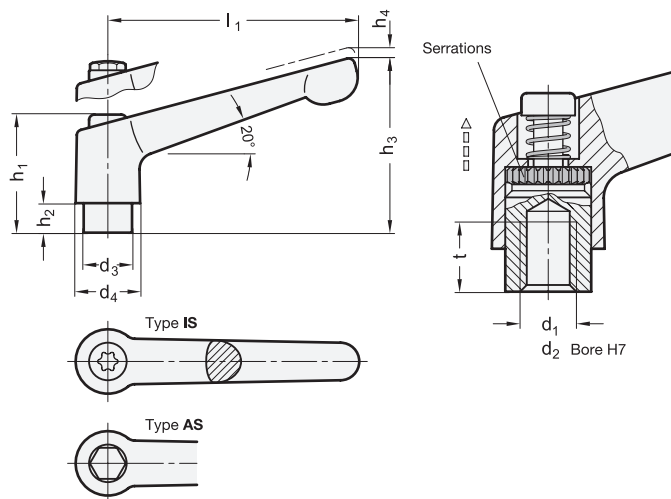
Adjustable hand levers GN 300.6 are ideal whenever parts have to be clamped in a confined space or in a particular lever position. The screw insert is connected to the handle via serrations and can easily be disengaged.

When the handle is lifted (pulled), the serration is released, and the hand lever can be relocated into any required position. When released, the handle engages again automatically.

The geometry of type AS is designed to prevent the accumulation of dirt and facilitates cleaning.

TECHNICAL INFORMATION

- ISO-Fundamental Tolerances (see page A21)
- Stainless Steel Characteristics (see page A26)



* Complete with

- | | |
|-------------------|---------------------------|
| AS | IS |
| With external hex | With internal hexalobular |

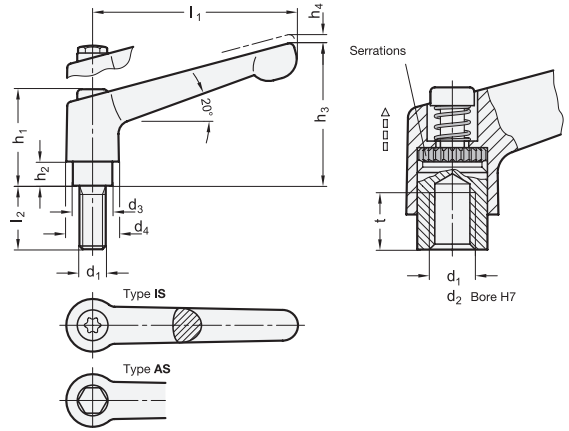
GN 300.6-With Internal Thread / Fitting Bore **STAINLESS STEEL**

Description	l1	d1	d2 H7	d3	d4	h1	h2	h3	h4 Stroke	t min.	⚖
GN 300.6-30-M3-*	30	M 3	-	10	13	24.5	4	31	3.5	8	25
GN 300.6-30-M4-*	30	M 4	-	10	13	24.5	4	31	3.5	8	31
GN 300.6-30-M5-*	30	M 5	-	10	13	24.5	4	31	3.5	8	29
GN 300.6-30-M6-*	30	M 6	-	10	13	24.5	4	31	3.5	8	30
GN 300.6-30-B5-*	30	-	B 5	10	13	24.5	4	31	3.5	8	25
GN 300.6-30-B6-*	30	-	B 6	10	13	24.5	4	31	3.5	8	25
GN 300.6-45-M4-*	45	M 4	-	10	13	24.5	4	34	3.5	8	42
GN 300.6-45-M5-*	45	M 5	-	10	13	24.5	4	34	3.5	8	40
GN 300.6-45-M6-*	45	M 6	-	10	13	24.5	4	34	3.5	8	40
GN 300.6-45-B5-*	45	-	B 5	10	13	24.5	4	34	3.5	8	35
GN 300.6-45-B6-*	45	-	B 6	10	17.5	24.5	4	34	3.5	8	35
GN 300.6-63-M6-*	63	M 6	-	13.5	17.5	31	6.5	45	4	11	80
GN 300.6-63-M8-*	63	M 8	-	13.5	17.5	31	6.5	45	4	11	80

GN 300.6-With Internal Thread / Fitting Bore **STAINLESS STEEL**

Description	l1	d1	d2 H7	d3	d4	h1	h2	h3	h4 Stroke	t min.	⚖
GN 300.6-63-B8-*	63	-	B 8	13.5	21	31	6.5	45	4	11	87
GN 300.6-78-B8-*	78	-	B 8	16	21	36	8	54	4	14	144
GN 300.6-78-B10-*	78	-	B 10	16	21	36	8	54	4	14	146
GN 300.6-78-M8-*	78	M 8	-	16	21	36	8	54	4	14	140
GN 300.6-78-M10-*	78	M 10	-	16	21	36	8	54	4	14	138
GN 300.6-78-M12-*	78	M 12	-	16	24	36	8	54	4	14	146
GN 300.6-92-M10-*	92	M 10	-	19	24	43	11	64	4	17	220
GN 300.6-92-M12-*	92	M 12	-	19	24	43	11	64	4	17	216
GN 300.6-92-B12-*	92	-	B 12	19	-	43	11	64	4	17	327

*Weight Type AS



* Complete with

AS With external hex
IS With internal hexalobular

GN 300.6-With Threaded Stud **STAINLESS STEEL**

Description	l1	d1	l2	d3	d4	h1	h2	h3	h4	Stroke	⚖️
GN 300.6-30-M3-6-*	30	M 3	6	10	13	24.5	4	31	3.5	31	
GN 300.6-30-M3-8-*	30	M 3	8	10	13	24.5	4	31	3.5	31	
GN 300.6-30-M3-10-*	30	M 3	10	10	13	24.5	4	31	3.5	32	
GN 300.6-30-M3-12-*	30	M 3	12	10	13	24.5	4	31	3.5	32	
GN 300.6-30-M3-16-*	30	M 3	16	10	13	24.5	4	31	3.5	33	
GN 300.6-30-M4-12-*	30	M 4	12	10	13	24.5	4	31	3.5	32	
GN 300.6-30-M4-16-*	30	M 4	16	10	13	24.5	4	31	3.5	32	
GN 300.6-30-M4-20-*	30	M 4	20	10	13	24.5	4	31	3.5	32	
GN 300.6-30-M4-25-*	30	M 4	25	10	13	24.5	4	31	3.5	33	
GN 300.6-30-M4-32-*	30	M 4	32	10	13	24.5	4	31	3.5	33	
GN 300.6-30-M5-12-*	30	M 5	12	10	13	24.5	4	31	3.5	32	
GN 300.6-30-M6-12-*	30	M 6	12	10	13	24.5	4	31	3.5	33	
GN 300.6-30-M5-16-*	30	M 5	16	10	13	24.5	4	31	3.5	33	
GN 300.6-30-M6-16-*	30	M 6	16	10	13	24.5	4	31	3.5	34	
GN 300.6-30-M5-20-*	30	M 5	20	10	13	24.5	4	31	3.5	33	
GN 300.6-30-M6-20-*	30	M 6	20	10	13	24.5	4	31	3.5	34	
GN 300.6-30-M5-25-*	30	M 5	25	10	13	24.5	4	31	3.5	34	
GN 300.6-30-M6-25-*	30	M 6	25	10	13	24.5	4	31	3.5	35	
GN 300.6-30-M5-32-*	30	M 5	32	10	13	24.5	4	31	3.5	35	
GN 300.6-30-M6-32-*	30	M 6	32	10	13	24.5	4	31	3.5	40	
GN 300.6-30-M5-40-*	30	M 5	40	10	13	24.5	4	31	3.5	36	
GN 300.6-30-M6-40-*	30	M 6	40	10	13	24.5	4	31	3.5	38	
GN 300.6-30-M5-50-*	30	M 5	50	10	13	24.5	4	31	3.5	33	
GN 300.6-30-M6-50-*	30	M 6	50	10	13	24.5	4	31	3.5	39	
GN 300.6-45-M4-12-*	45	M 4	12	10	13	24.5	4	34	3.5	43	
GN 300.6-45-M4-16-*	45	M 4	16	10	13	24.5	4	34	3.5	43	
GN 300.6-45-M4-20-*	45	M 4	20	10	13	24.5	4	34	3.5	41	
GN 300.6-45-M4-25-*	45	M 4	25	10	13	24.5	4	34	3.5	44	
GN 300.6-45-M4-32-*	45	M 4	32	10	13	24.5	4	34	3.5	44	
GN 300.6-45-M5-12-*	45	M 5	12	10	13	24.5	4	34	3.5	40	
GN 300.6-45-M5-16-*	45	M 5	16	10	13	24.5	4	34	3.5	40	
GN 300.6-45-M5-20-*	45	M 5	20	10	13	24.5	4	34	3.5	40	
GN 300.6-45-M5-25-*	45	M 5	25	10	13	24.5	4	34	3.5	40	
GN 300.6-45-M5-32-*	45	M 5	32	10	13	24.5	4	34	3.5	70	
GN 300.6-45-M5-40-*	45	M 5	40	10	13	24.5	4	34	3.5	47	
GN 300.6-45-M5-50-*	45	M 5	50	10	13	24.5	4	34	3.5	44	
GN 300.6-45-M6-12-*	45	M 6	12	10	13	24.5	4	34	3.5	40	
GN 300.6-45-M6-16-*	45	M 6	16	10	13	24.5	4	34	3.5	40	
GN 300.6-45-M6-20-*	45	M 6	20	10	13	24.5	4	34	3.5	43	
GN 300.6-45-M6-25-*	45	M 6	25	10	13	24.5	4	34	3.5	40	
GN 300.6-45-M6-32-*	45	M 6	32	10	13	24.5	4	34	3.5	40	
GN 300.6-45-M6-40-*	45	M 6	40	10	13	24.5	4	34	3.5	60	
GN 300.6-45-M6-50-*	45	M 6	50	10	13	24.5	4	34	3.5	50	
GN 300.6-63-M6-16-*	63	M 6	16	13.5	17.5	31	6.5	45	4	100	
GN 300.6-63-M6-20-*	63	M 6	20	13.5	17.5	31	6.5	45	4	90	
GN 300.6-63-M6-25-*	63	M 6	25	13.5	17.5	31	6.5	45	4	90	
GN 300.6-63-M6-32-*	63	M 6	32	13.5	17.5	31	6.5	45	4	100	
GN 300.6-63-M6-40-*	63	M 6	40	13.5	17.5	31	6.5	45	4	100	
GN 300.6-63-M6-50-*	63	M 6	50	13.5	17.5	31	6.5	45	4	100	
GN 300.6-63-M6-63-*	63	M 6	63	13.5	17.5	31	6.5	45	4	100	

GN 300.6-With Threaded Stud **STAINLESS STEEL**

Description	l1	d1	l2	d3	d4	h1	h2	h3	h4	Stroke	⚖️
GN 300.6-63-M8-16-*	63	M 8	16	13.5	17.5	31	6.5	45	4	100	
GN 300.6-63-M8-20-*	63	M 8	20	13.5	17.5	31	6.5	45	4	93	
GN 300.6-63-M8-25-*	63	M 8	25	13.5	17.5	31	6.5	45	4	100	
GN 300.6-63-M8-32-*	63	M 8	32	13.5	17.5	31	6.5	45	4	100	
GN 300.6-63-M8-40-*	63	M 8	40	13.5	17.5	31	6.5	45	4	100	
GN 300.6-63-M8-50-*	63	M 8	50	13.5	17.5	31	6.5	45	4	100	
GN 300.6-63-M8-63-*	63	M 8	63	13.5	17.5	31	6.5	45	4	100	
GN 300.6-78-M8-20-*	78	M 8	20	16	21	36	8	54	4	160	
GN 300.6-78-M8-25-*	78	M 8	25	16	21	36	8	54	4	140	
GN 300.6-78-M8-32-*	78	M 8	32	16	21	36	8	54	4	150	
GN 300.6-78-M8-40-*	78	M 8	40	16	21	36	8	54	4	200	
GN 300.6-78-M8-50-*	78	M 8	50	16	21	36	8	54	4	168	
GN 300.6-78-M8-63-*	78	M 8	63	16	21	36	8	54	4	163	
GN 300.6-78-M10-20-*	78	M 10	20	16	21	36	8	54	4	176	
GN 300.6-78-M10-25-*	78	M 10	25	16	21	36	8	54	4	160	
GN 300.6-78-M10-32-*	78	M 10	32	16	21	36	8	54	4	160	
GN 300.6-78-M10-40-*	78	M 10	40	16	21	36	8	54	4	160	
GN 300.6-78-M10-50-*	78	M 10	50	16	21	36	8	54	4	170	
GN 300.6-78-M10-63-*	78	M 10	63	16	21	36	8	54	4	180	
GN 300.6-78-M10-80-*	78	M 10	80	16	21	36	8	54	4	150	
GN 300.6-78-M12-20-*	78	M 12	20	16	21	36	8	54	4	165	
GN 300.6-78-M12-25-*	78	M 12	25	16	21	36	8	54	4	168	
GN 300.6-78-M12-32-*	78	M 12	32	16	21	36	8	54	4	174	
GN 300.6-78-M12-40-*	78	M 12	40	16	21	36	8	54	4	180	
GN 300.6-78-M12-50-*	78	M 12	50	16	21	36	8	54	4	200	
GN 300.6-78-M12-63-*	78	M 12	63	16	21	36	8	54	4	195	
GN 300.6-78-M12-80-*	78	M 12	80	16	21	36	8	54	4	207	
GN 300.6-92-M10-20-*	92	M 10	20	19	24	43	11	64	4	240	
GN 300.6-92-M10-25-*	92	M 10	25	19	24	43	11	64	4	200	
GN 300.6-92-M10-32-*	92	M 10	32	19	24	43	11	64	4	240	
GN 300.6-92-M10-40-*	92	M 10	40	19	24	43	11	64	4	260	
GN 300.6-92-M10-50-*	92	M 10	50	19	24	43	11	64	4	260	
GN 300.6-92-M10-63-*	92	M 10	63	19	24	43	11	64	4	264	
GN 300.6-92-M10-80-*	92	M 10	80	19	24	43	11	64	4	272	
GN 300.6-92-M12-20-*	92	M 12	20	19	24	43	11	64	4	250	
GN 300.6-92-M12-25-*	92	M 12	25	19	24	43	11	64	4	240	
GN 300.6-92-M12-32-*	92	M 12	32	19	24	43	11	64	4	240	
GN 300.6-92-M12-40-*	92	M 12	40	19	24	43	11	64	4	260	
GN 300.6-92-M12-50-*	92	M 12	50	19	24	43	11	64	4	260	
GN 300.6-92-M12-63-*	92	M 12	63	19	24	43	11	64	4	260	
GN 300.6-92-M12-80-*	92	M 12	80	19	24	43	11	64	4	294	

* Weight Type AS



3
Clamping levers